

- RIB COLLARS MAY BE ATTACHED USING THE FOLLOWING METHODS:
 - BOLT-ON THROUGH A ROPE STRIP (STD FOR AIR-FILLED COLLAR);
 - BOLT-ON THROUGH A STRIP WITHOUT A ROPE;
 - SLIDE-ON THROUGH A ROPE CHANNEL (STD FOR HYBRID COLLAR);
 - TIE DOWN FROM D-RINGS OR GROMMETS TO LUGS, D-RINGS OR GROMMETS IN BOAT;
 - LASHING STRIPS THAT ENCIRCLE THE COLLAR AND ATTACH TO THE BOAT; OR
 - ANY COMBINATION OF THE ABOVE.

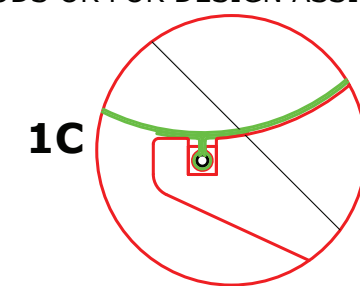
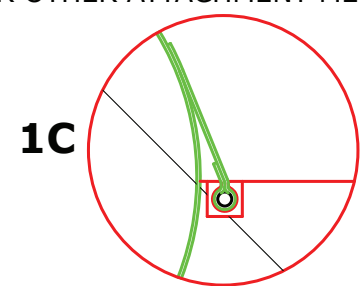
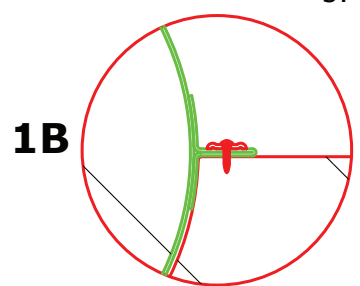
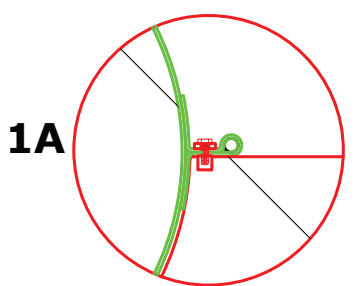
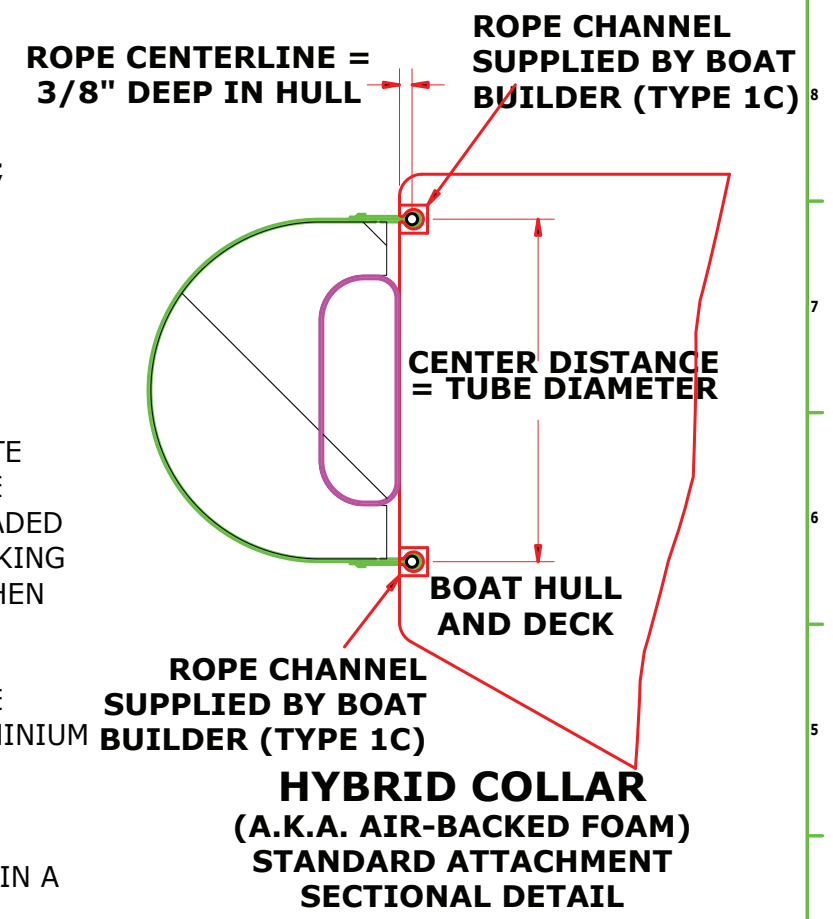
ATTACHMENT TYPES 1A AND 1C (OR A COMBINATION OF THE TWO) ARE PREFERRED FOR HEAVY-DUTY, MILITARY AND INDUSTRIAL USE.

- COLLARS CAN BE INSTALLED BY DRILLING THROUGH ATTACHMENT STRIPS WITH SELF-TAPPING SCREWS, PROVIDED THAT THEY ARE SPACED CORRECTLY TO PROVIDE ADEQUATE HOLDING STRENGTH AND THERE IS ENOUGH MATERIAL IN THE HULL/DECK TO HOLD THE SCREW THREADS. OTHERWISE, GLUE-IN OR EXPANDING THREADED INSERTS AND THREADED BOLTS ARE RECOMMENDED (ESPECIALLY WHEN SEALING OF HOLES IS AN ISSUE). A BACKING BAR OR LARGE "FENDER" WASHERS ARE REQUIRED TO SPREAD LOAD ON THE FABRIC WHEN BOLTING OR SCREWING DOWN AN ATTACHMENT STRIP.

- 316 OR 316L STAINLESS STEEL FASTENERS ARE RECOMMENDED FOR MARINE USE. ROPE CHANNELS ARE TYPICALLY OF EXTRUDED ALUMINUM OR POLYMER CONSTRUCTION. ALUMINIUM THREADED INSERTS MAY BE USED IF PROPERLY SPACED AND NOT OVERLOADED. ALL FASTENERS ARE SUPPLIED BY BOAT MANUFACTURER UNLESS SPECIFICALLY REQUESTED.

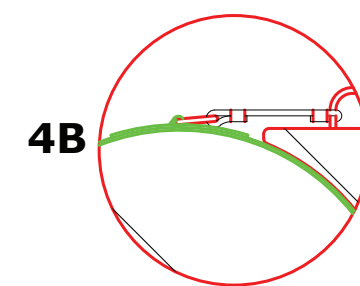
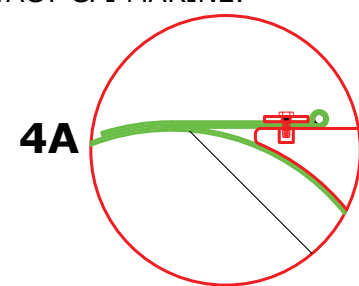
- TRANSOM ATTACHMENT: TRANSOM ATTACHMENTS ARE SOMETIMES REQUIRED TO MAINTAIN A POSITIVE SEAL AGAINST THE BACK TRANSOM, OR TO POSITIVELY LOCK THE COLLAR TO THE BOAT IF DUAL SLIDE-ON ROPE STRIPS ARE USED. USUALLY ARE FIELD INSTALLED TO ENSURE PROPER LOCATION. THEY CONSIST OF THE FOLLOWING:
 - GLUE-ON STRAP THAT IS BOLTED TO THE TOP OF THE TRANSOM;
 - GLUE-ON D-RING TIED TO A LUG ON THE TOP OF THE TRANSOM;
 - A FLAP IS FASTENED TO THE TRANSOM TO CLOSE THE END OF THE COLLAR (USUALLY FOR HYBRID COLLARS ONLY).

5. FOR OTHER ATTACHMENT METHODS OR FOR DESIGN ASSISTANCE, CONTACT CPI MARINE.



AIR COLLAR/DECK ATTACHMENT

AIR COLLAR/HULL ATTACHMENT



STANDARD TOLERANCES (U.N.O)	
X.XX = ± 0.01	FRACT. ± 1/16
X.XXX = ± 0.005	ANGLES: ± .5∞

UNITS: INCHES
SCALE: nts

CPI Marine Division
P.O. Box 2040, Kyle, Texas 78640
Tel (512) 295-2683 Fax (512) 295-2245

REV	M/D/Y	CHK	DESCRIPTION OF CHANGE

CPI STANDARD RIB ATTACHMENT DETAIL RIGID INFLATABLE BOAT COLLAR

DN: kw **DATE:** 12/20/05
CHK: kw **DATE:** 1/3/06
REV: -
DWG: RIB-STD-ATTACH